



# CORPORATE PRESENTATION

OCTOBER 2021

TSXV:DEF

OTCQX:DNCVF

FRA:D4E



# DISCLAIMER

## FORWARD-LOOKING INFORMATION AND STATEMENTS

This presentation contains “forward-looking information” and “forward-looking statements” within the meaning of applicable securities laws. This information and statements address future activities, events, plans, developments and projections. All statements, other than statements of historical fact, constitute forward looking statements or forward-looking information. Such forward-looking information and statements are frequently identified by words such as “may”, “will”, “should”, “anticipate”, “plan”, “expect”, “believe”, “estimate”, “intend” and similar terminology and reflect assumptions, estimates, opinions and analysis made by management of Defiance in light of its experience, current conditions, expectations of future development and other factors which it believes to be reasonable and relevant.

Forward-looking information and statements involve known and unknown risks and uncertainties that may cause Defiance’s actual results, performance and achievements to differ materially from those expressed or implied by the forward-looking information and statements and accordingly, undue reliance should not be placed thereon. Risks and uncertainties that may cause actual results to vary include but are not limited to the speculative nature of mineral exploration and development, including the uncertainty of reserve and resource estimates; operational and technical difficulties; the availability of suitable financing alternatives; fluctuations in gold and other commodity prices; changes to and compliance with applicable laws and regulations, including environmental laws and obtaining requisite permits; political, economic and other risks arising from Defiance’s Mexican activities; fluctuations in foreign exchange rates; as well as other risks and uncertainties which are more fully described in our annual and quarterly Management’s Discussion and Analysis and in other filings made by us with Canadian securities regulatory authorities and available at [www.sedar.com](http://www.sedar.com). Defiance disclaims any obligation to update or revise any forward-looking information or statements except as may be required by law.

### NI43-101 DISCLOSURE:

George Cavey, P. Geo., a Qualified Person under the meaning of Canadian National Instrument 43-101 is responsible for the technical information in this presentation.

# SOLID PROJECT BASE | WITH A FOCUS ON PRECIOUS METALS

	San Acacio Project	Tepal Project
LOCATION	Zacatecas	Michoacán
PRIMARY COMMODITY	Silver	Gold-Copper
DEPOSIT TYPE	Epithermal Vein	Porphyry-Epithermal
STAGE	Resource	Pre-Feasibility
NI 43-101 RESOURCE	16.9mm ozs Ag *	1.8mm ozs Au + 813mm lbs Cu
INFRASTRUCTURE	Excellent; road, power grid, water, and experienced Mexican labor	Excellent; road, seaport, access with low topographical relief
OWNERSHIP	Under Option	100%



\*-Source: NI-43-101 Technical Report and Resource Estimate, San Acacio Silver Deposit, Zacatecas State, Mexico, by Giroux and Cuttle, September 2014 (further details in the Appendix of this presentation)

+-Source: NI-43-101 Technical Report Preliminary Economic Assessment on the Tepal Project, Michoacán, Mexico, JDS Energy & Mining Inc, January 2017 (further details in the Appendix of this presentation)

# WHY INVEST IN DEFIANCE?

**Robust Resource Base  
(1,2) and Significant  
Exploration Potential**

**Proven Mine Finders:**  
**Experienced** Management  
team with decades of  
exploration success leading  
to M&A and Mine  
Development

**Leverage to Precious  
Metal Prices:**  
Tepal Au Price Sensitivity  
Zacatecas Resource  
Upside

**Highly Aligned with  
Shareholders:**  
Management and Key  
Shareholders aligned

**Drill-ready exploration  
targets:** Systematic exploration  
and reinterpretation  
of historical work has generated  
highly prospective targets to add  
ounces and increase grade.



[\(1\) Please see Defiance news release dated January 15, 2015 and Appendix for 43-101 Inferred Mineral Resource Estimate](#)

[\(2\) Please see ValOro news release dated January 19, 2017 and Appendix for PEA Assumptions](#)

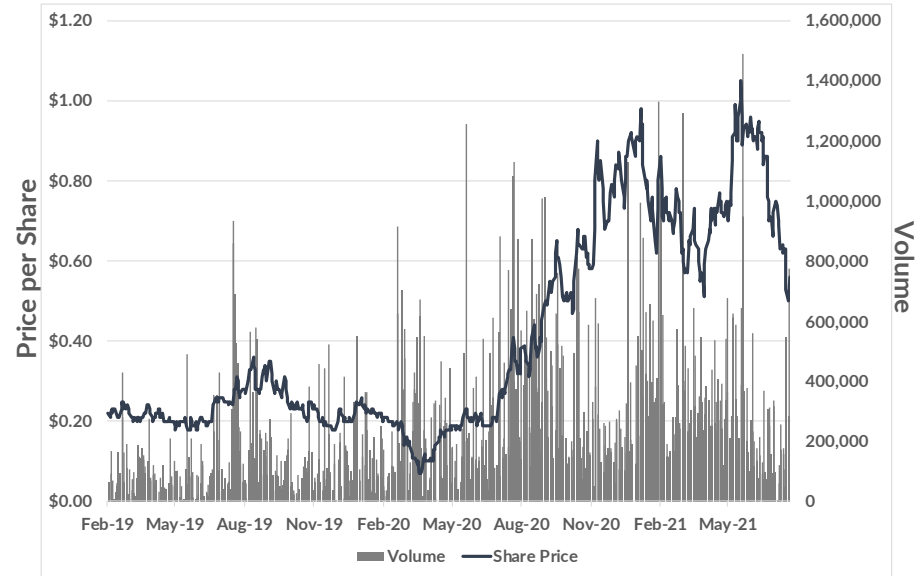


# TIGHT SHARE STRUCTURE

## Share Structure

TRADING	Trading Symbols	TSXV:DEF OTC:DNCVF
	52 Week Hi-Low	\$1.07-\$0.42
	Average Daily Trading Volume	~195,750
CASH POSITION March 31 <sup>st</sup> , 2021	Cash (CAD \$M)	~\$19
SHARE STRUCTURE October 12 <sup>th</sup> , 2021	Share Price	\$0.56
	Market Cap (CAD \$M)	~\$123.3
	Common Shares	220,226,718
	Options	7.4
	Warrants	29.4
	Fully Diluted	259,396,552
OWNERSHIP	Institutional Ownership	~35%

## Share Price History



Source: Sedar, TMX, Yahoo Finance

# INDUSTRY VETERANS WITH PROVEN SUCCESS

**Chris Wright, BA**  
**Chairman of the Board & CEO**

Founder and Director of Windermere Capital, an investment firm and manager of two private investment funds: the Navigator and Breakaway Strategic Resource Funds, both of which are significant shareholders of Defiance.



**Sherry Roberge, CPA, CA**  
**CFO & Corporate Secretary**

Member of the Institute of Chartered Professional Accountants of British Columbia and holds a Bachelor of Commerce degree from Royal Roads University as well as a Master of Professional Accounting from the University of Saskatchewan.



**George Cavey, P.Geo**  
**Vice-President, Exploration & Qualified Person**

Former VP Exploration of Orko Silver, part of the team who discovered 264mm oz La Preciosa deposit sold to Coeur Mining in 2013 for \$380mm. 2004 recipient of the APEGBC C.J. Westermann Award. Canadian Professional Geoscientist Award, Canada's highest honor for Professional Geoscientist.



**Douglas Cavey**  
**Vice-President, Corporate Development; Sr. Technical Advisor**

Over a decade of experience working on exploration, development, and mining projects for private, junior, and mid-tier mining companies.



**Jennifer Roskowski, MSc**  
**Principal Geologist**

Global exploration geologist with a decade of experience working with one of the world's largest copper mining companies on global generative exploration and target definition.



**Dunham L. Craig, P.Geo**  
**Director**

Past Director of Silvercrest Mines Inc., Past President and CEO and Director of Valoro/Geologix Exploration Inc., Vice President of Exploration and Corporate Development for Wheaton River Minerals.



**Paul Smith, MSc**  
**Director**

Founding shareholder and past Finance Director of Ocean Partners Holdings Limited, one of the world's large traders of copper, zinc and lead concentrates.



**James Bergin, BBA**  
**Director**

President and CIO of Hillhead Capital Inc. with 29 years of experience in capital markets with Credit Suisse, Barclays capital and Toronto Dominion Bank.



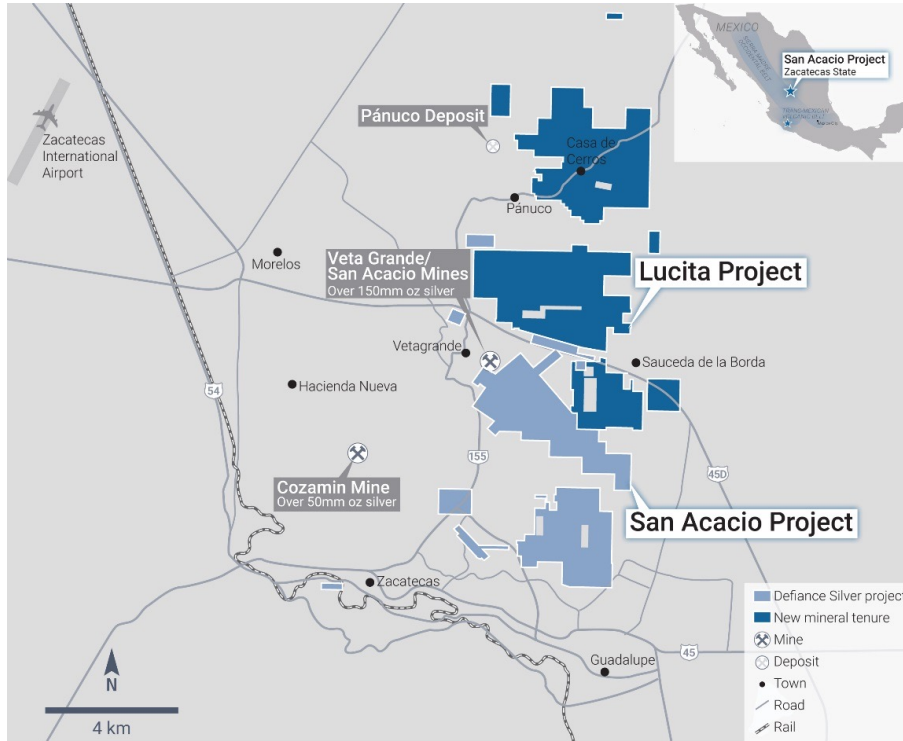
**Ron Sowerby**  
**Director**

Director of Glentel Inc., which was purchased by Bell Inc. for \$594 million. Comptroller and CFO of TCG International Inc. (Trans Canada Glass Ltd.)



# ZACATECAS DISTRICT PROJECTS

## WITHIN THE BILLION OZ ZACATECAS SILVER CAMP



- Located in Zacatecas, Mexico.
- Option to acquire 100% ownership.
- Current Initial Resource: 16.9 mm Oz. Ag based on 44 holes totalling 10,200m of drilling.
- San Acacio and Lagartos projects located on the prolific Veta Grande and Mala Noche Veins.
- Significant Intersections outside of current resource; Base Metals never tabled into previous resource estimates.
- Excellent infrastructure, topography, and labour.
- The Zacatecas Silver district has produced >1B ozs Ag and is still a prolific mining region for silver and base metal deposits.
- “Fresnillo in the 60s”.
  - Similar crustal position/crustal blocks
  - Fresnillo out of ore by the mid 1960's; now the world's largest primary silver mine

### Discovery-focused geoscience works

# SAN ACACIO – MIRADOR/ALMADEN

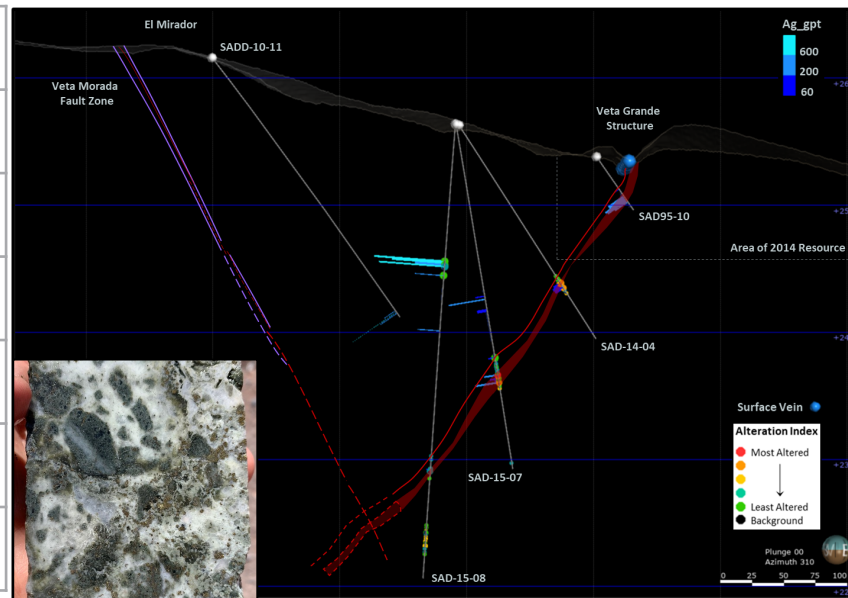
## SIGNIFICANT MINERALIZATION OUTSIDE THE PRINCIPLE VETA GRANDE

Hole ID	From	To	Width*	Ag	Au	Cu	Pb	Zn	Zone
SADD09-04A	243.00	244.3	1.3*	769	0.15	0.01	0.23	0.79	Natividad
<i>including</i>	243.00	243.3	0.3*	3,090	0.57	0.04	0.92	3.27	Natividad
SADD10-09	314.85	316.05	1.20*	239	0.42	0.11	1.33	4.10	HW VG
SAD15-08	106.05	113.3	7.25*	631.4	0.43	0.01	0.09	0.22	Unknown
SAD17-13	261.00	264.0	3.0*	372.2	0.10	0.01	0.16	0.45	HW Vein
<i>including</i>	261.00	262.0	1.0*	748.7	0.19	0.01	0.31	0.88	HW Vein

By the late 1960's, the Fresnillo mine had become marginal. In 1975, as a result of Geochemical, Geophysical and Geological programs, Fresnillo discovered the Santo Nino vein at a depth of approximately 300m; 3m of 1087 g/t Ag, 1.62 g/t Au, 0.4% Pb, 0.7% Zn.\*\*

\*True thickness unknown

\*\* (Ruvalcaba-Ruiz & Thompson, 1988; Gemmel, *et al.*, 1988, Querol & Palacios, 1990)



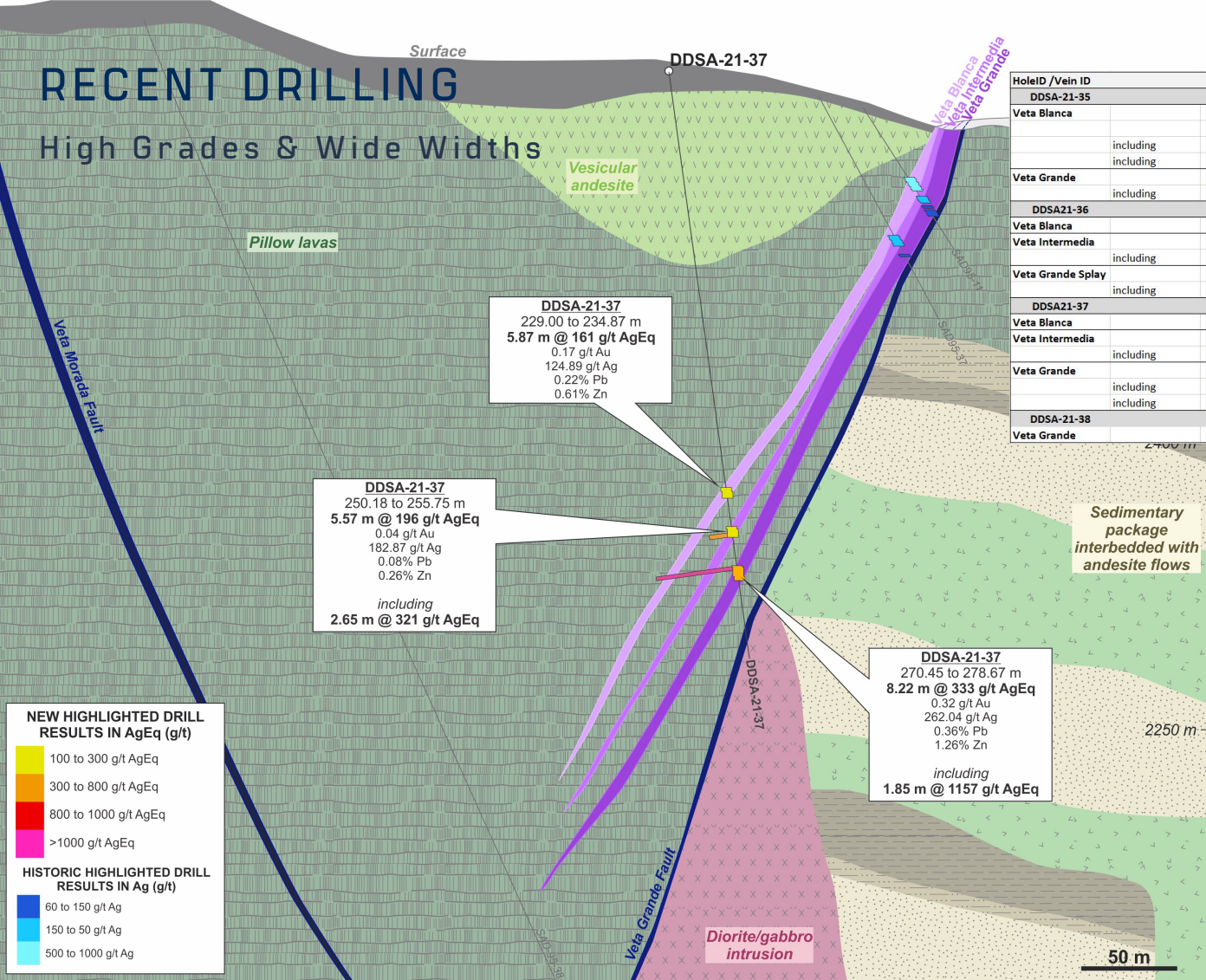
Mineralised Fault Breccia

SAD-15-08: 7.25m @ 631 gpt Ag

Cross-section through the El Mirador Zone with vein structures & target interpretation shown in red and purple.

# RECENT DRILLING

## High Grades & Wide Widths

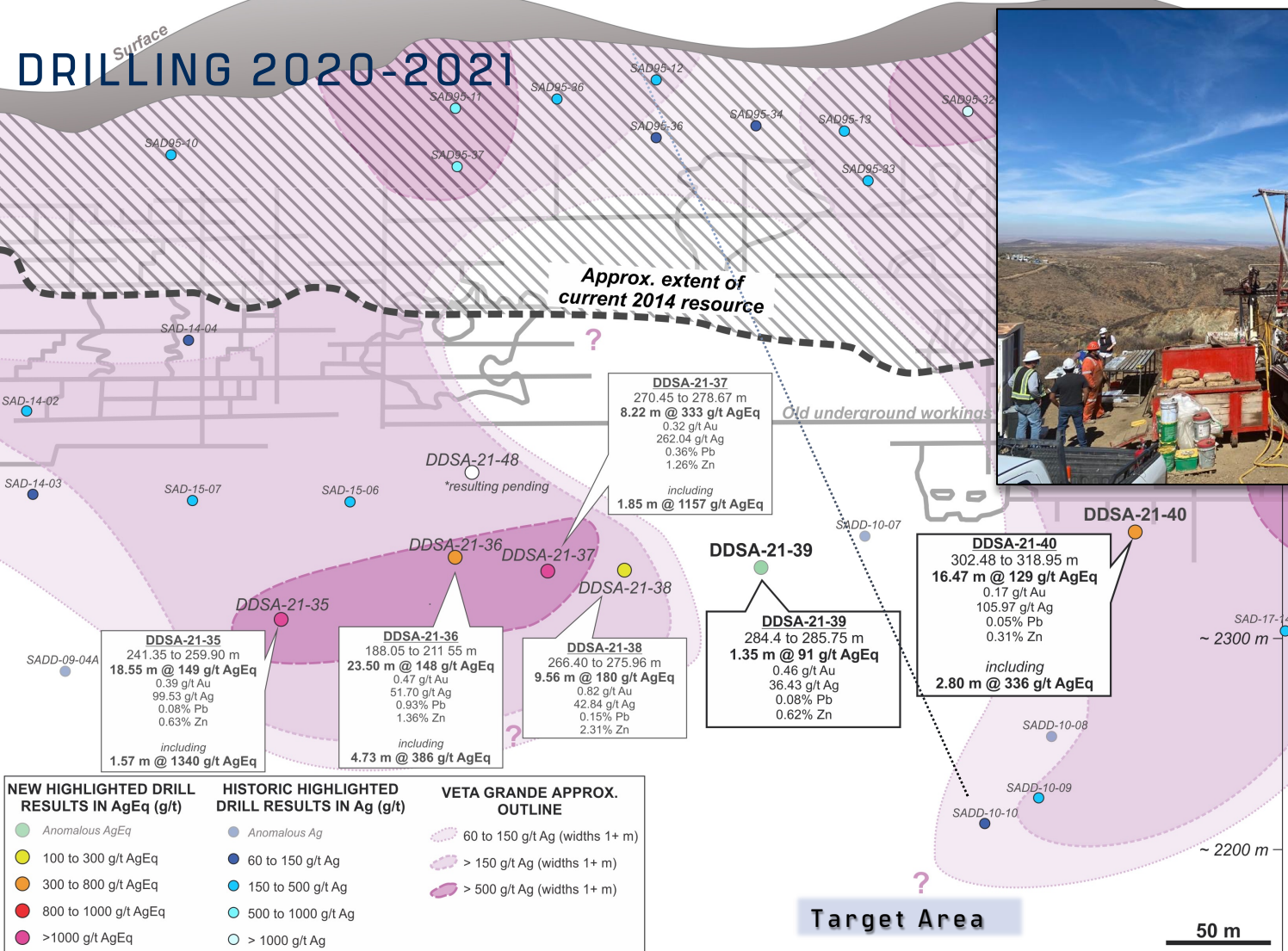


HoleID / Vein ID	From	To	Width_m	Au_ppm	Ag_ppm	Pb_pct	Zn_pct	AgEq
<b>DDSA-21-35</b>								
Veta Blanca	148.65	152.55	<b>3.90</b>	0.15	116.15	0.07	0.18	<b>134</b>
	154.53	158.17	<b>3.64</b>	0.20	191.13	0.09	0.20	<b>213</b>
including	154.53	155.45	0.92	0.74	<b>705.43</b>	0.34	0.70	<b>787</b>
including	155.05	155.45	0.40	1.02	<b>1200.00</b>	0.52	1.22	<b>1322</b>
Veta Grande	241.35	259.90	<b>18.55</b>	0.39	99.53	0.08	0.63	<b>149</b>
including	248.70	250.27	<b>1.57</b>	<b>2.27</b>	<b>1090.00</b>	0.72	2.33	<b>1340</b>
<b>DDSA21-36</b>								
Veta Blanca	149.15	152.20	<b>3.05</b>	0.07	123.44	0.05	0.20	<b>136</b>
Veta Intermedia	165.65	174.00	<b>8.35</b>	0.07	96.77	0.02	0.04	<b>103</b>
including	165.65	166.35	0.70	0.23	<b>403.00</b>	0.09	0.12	<b>425</b>
Veta Grande Splay	188.05	211.55	<b>23.50</b>	0.47	51.70	0.93	1.36	<b>148</b>
including	193.80	198.53	<b>4.73</b>	1.31	144.11	2.80	3.60	<b>386</b>
<b>DDSA21-37</b>								
Veta Blanca	229.00	234.87	<b>5.87</b>	0.17	124.89	0.22	0.61	<b>161</b>
Veta Intermedia	250.18	255.75	<b>5.57</b>	0.04	182.87	0.08	0.26	<b>196</b>
including	253.10	255.75	<b>2.65</b>	0.05	307.26	0.09	0.27	<b>321</b>
Veta Grande	270.45	278.67	<b>8.22</b>	0.32	262.04	0.36	1.26	<b>333</b>
including	270.45	273.45	<b>3.00</b>	0.42	<b>689.84</b>	0.42	1.87	<b>742</b>
including	270.45	272.30	<b>1.85</b>	0.14	<b>1102.43</b>	<b>0.45</b>	<b>1.10</b>	<b>1157</b>
<b>DDSA-21-38</b>								
Veta Grande	266.40	275.96	<b>9.56</b>	0.82	42.84	0.15	2.31	<b>180</b>



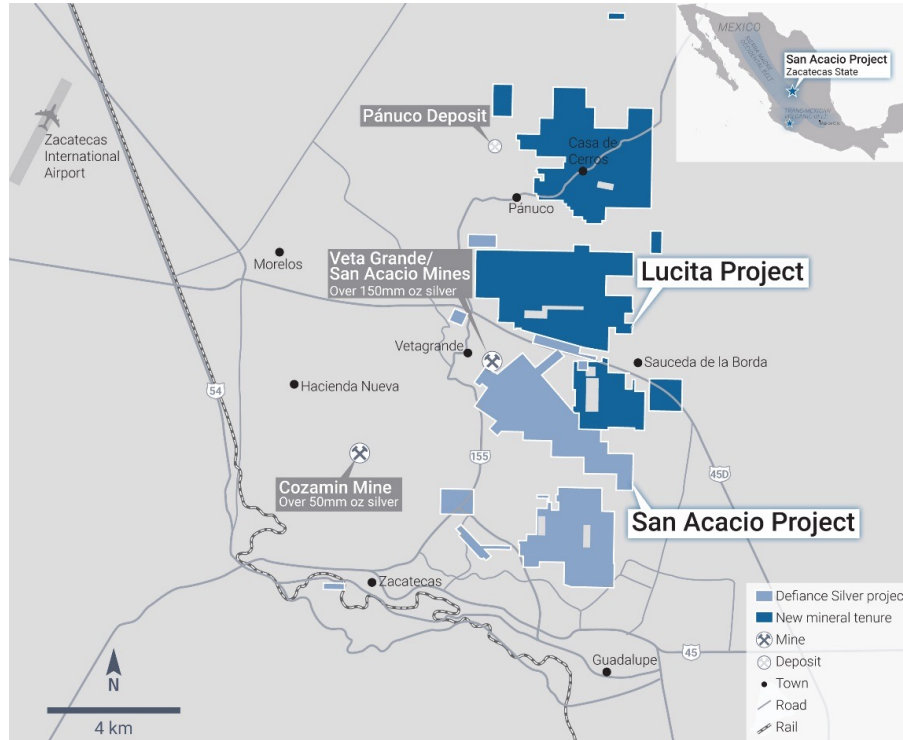


# DRILLING 2020-2021



# LUCITA ACQUISITION

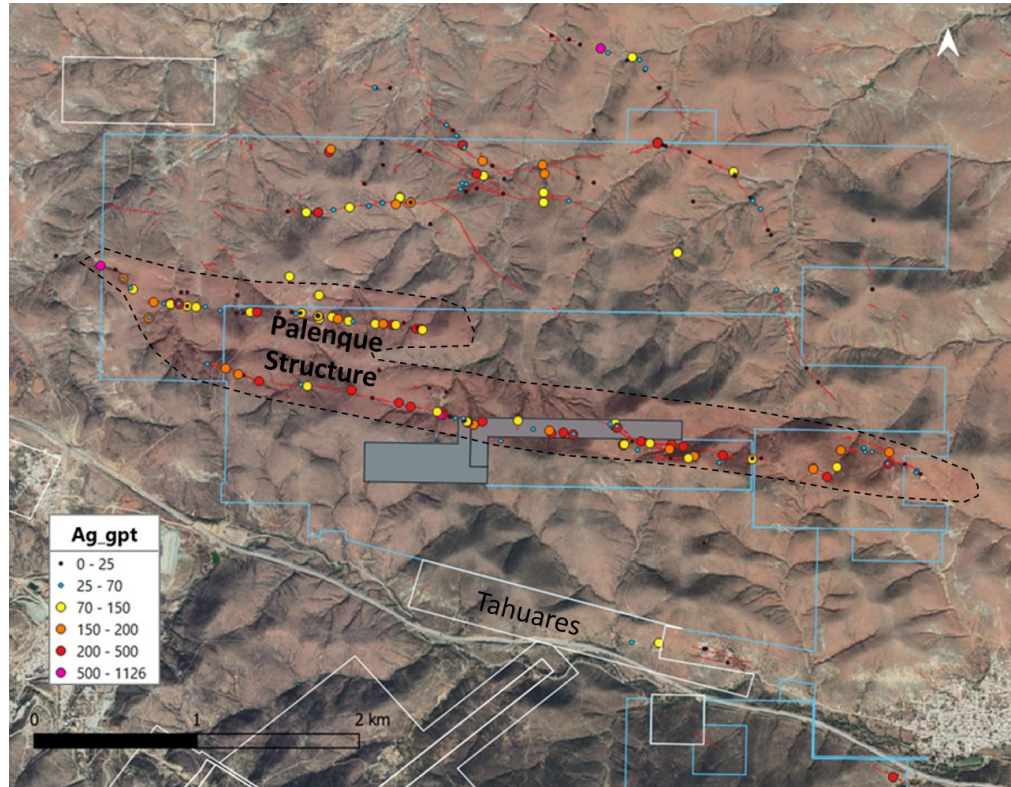
## DISCOVERY READY PARTNERSHIP WITH PAN AMERICAN SILVER



- Nearly triples Defiance land position in historic Zacatecas silver district.
- Option to acquire 100% ownership.
- Strengthens land position to ~1/4<sup>TH</sup> of historical district.
- The Zacatecas Silver district has produced >1B Ozs Ag and is still a prolific mining region for Ag and base metal deposits.
- High-grade historical drilling on Northern, Panuco licenses.
  - Hosts the on-strike extension to the 19 million oz Ag-Eq. Panuco Deposit.
- Significant, well-mineralized, and un-drilled multi-kilometer target at Palenque.
- Excellent infrastructure, topography, and labour.
- Aggressive follow up exploration planned for 2021.
  - Surface Geochemistry
  - Surface Geophysics
  - Diamond Drilling

# EL PALENQUE

## MULTI-KILOMETRE TARGET WITH GRADE



- Surface grade over multiple kilometres.
- Adjacent to San Acacio project.
- Un-drilled, high priority target.
  - 12m wide with 4km of strike length has returned historical grab samples between 25 g/t Ag to over 700 g/t Ag.
- Identified through regional targeting program.
- Surface work ongoing; Mapping and sampling.
- Excellent infrastructure, topography, and labour.
- Expanded follow up exploration planned for 2021.
  - Surface Geochemistry
  - Surface Geophysics
  - Diamond Drilling Planned 2021



# STRATEGY TO ADD VALUE AT ZACATECAS DISTRICT PROJECTS

DISCOVERY-FOCUSED  
MINERAL SYSTEMS  
GEOSCIENCE

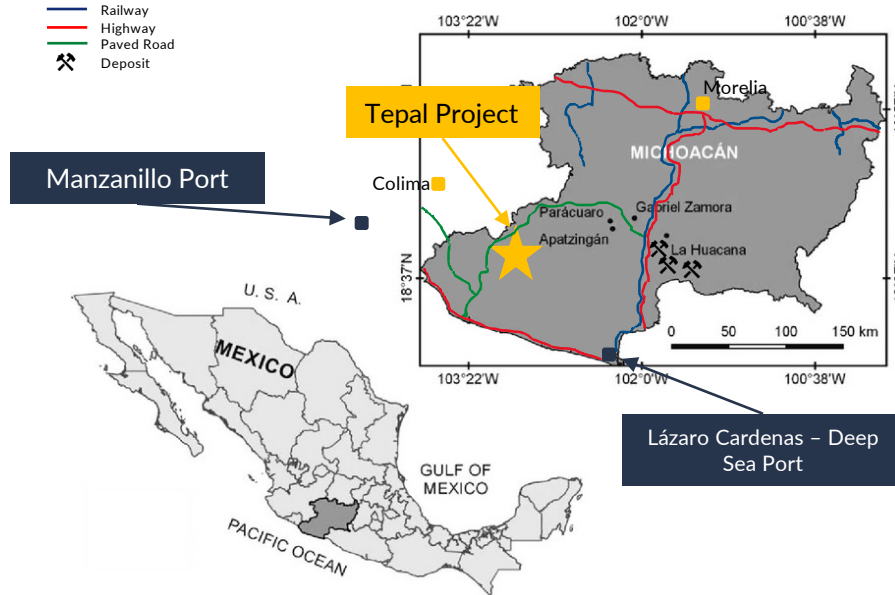
FULLY FINANCED  
EXPLORATION AND RESOURCE  
DRILLING PROGRAM

ADDING OUNCES TO AN  
ADVANCED ASSET



# TEPAL GOLD-COPPER PROJECT

## TECHNICALLY & FINANCIALLY DE-RISKED



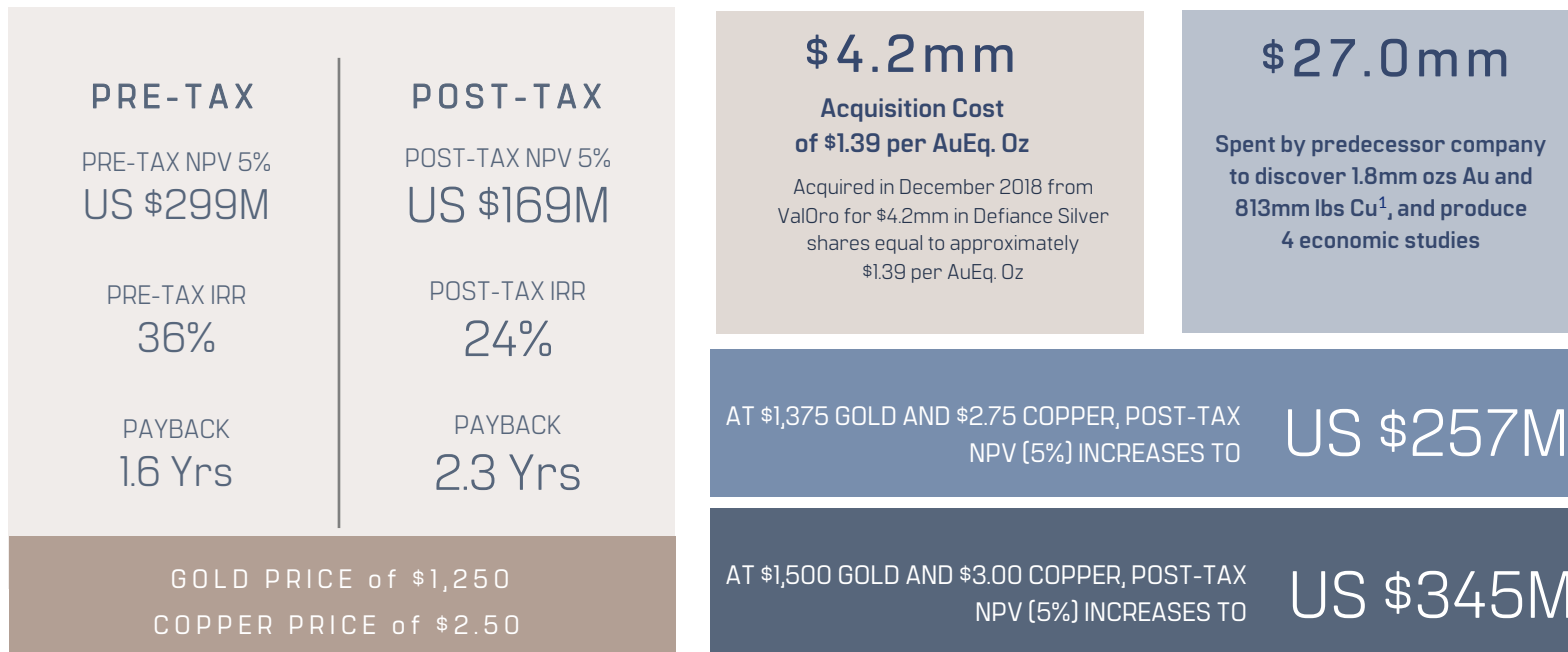
- Located in Michoacán near the border of Jalisco State.
- 100% ownership.
- Current M&I resource: 1.8 mm Oz. Au & 813 mm lbs Cu<sup>+</sup>.
- C\$27M spent to-date.
- Excellent infrastructure: road accessible with power, water, and port facilities.
- Surface rights currently held by private landowners.
- 50 megawatts available today (28 MW required for mine).

*Significant Exploration Target: Un-tested, recently discovered High Grade Gold Feeder System*

+Source: NI-43-101 Technical Report Preliminary Economic Assessment on the Tepal Project, Michoacan, Mexico, JDS Energy & Mining Inc; January 2017 (further details in the Appendix of this presentation)

# TEPAL GOLD-COPPER PROJECT

## ACCRETIVE ACQUISITION IN A DOWN MARKET



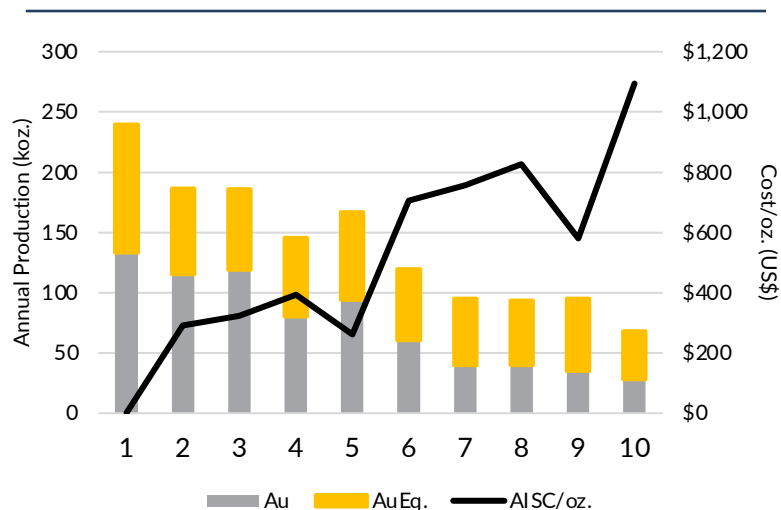
Using base case price assumptions of \$1,250/oz. gold, \$2.50/lb copper and \$18.00/oz. silver, Tepal has an estimated \$169 million after-tax NPV at a 5% discount rate, an attractive 24% after-tax IRR, and an after-tax payback period of 2.3 years. Base case LOM revenue split is 54% gold/43% copper/3% silver. The base case economic evaluation used metals prices that are close to current spot prices and near the median of current medium to long term analyst forecasts. After-tax economics were prepared using the following assumptions: a 2.5% Net Smelter Return (NSR) royalty, 0.5% Mexican royalty based on precious metals revenue, 7.5% Mexican royalty based on EBITDA, 12% annual depreciation rate, accumulated tax loss carry forward of US\$22.4 million, and a 30% Mexican income tax rate. Please see Valoro News Release dated January 29, 2017

1- Source: NI-43-101 Technical Report Preliminary Economic Assessment on the Tepal Project, Michoacan, Mexico, JDS Energy & Mining Inc, January 2017

# TEPAL GOLD-COPPER PROJECT

## 2017 PEA HIGHLIGHTS (USD)

LOM Production & Cash Costs



- (1) Using US\$1,250/oz. Au price, US\$2.50/lb. Cu price and US\$18.00/oz. Ag price  
 (2) Cash cost includes all mining, milling & refining, transport, mine-level G&A, and royalty costs; net of byproduct credits

Production Summary

LOM  
10 Years

INITIAL CAPITAL COST  
US\$214M

PRODUCTION AVERAGES LOM 10 YEARS

Au: 79,000 oz

Cu: 32Mlbs

LOM 10 YEARS PER OZ AU COST

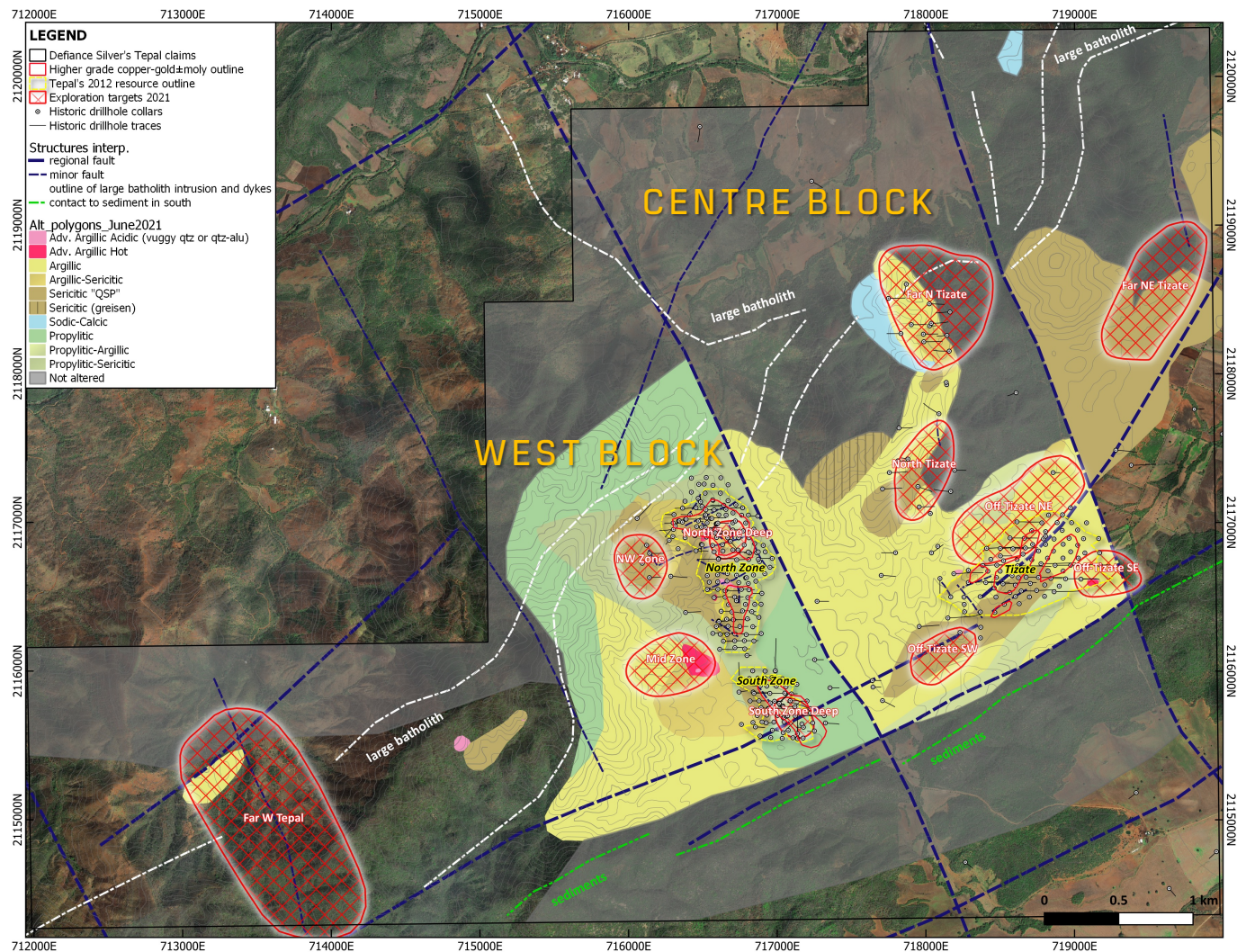
Avg cash cost \$313/oz

AISC \$396/oz

Using base case price assumptions of \$1,250/oz. gold, \$2.50/lb copper and \$18.00/oz. silver, Tepal has an estimated \$169 million after-tax NPV at a 5% discount rate, an attractive 24% after-tax IRR, and an after-tax payback period of 2.3 years. Base case LOM revenue split is 54% gold/43% copper/3% silver. The base case economic evaluation used metals prices that are close to current spot prices and near the median of current medium to long term analyst forecasts. After-tax economics were prepared using the following assumptions: a 2.5% Net Smelter Return (NSR) royalty, 0.5% Mexican royalty based on precious metals revenue, 7.5% Mexican royalty based on EBITDA, 12% annual depreciation rate, accumulated tax loss carry forward of US\$22.4 million, and a 30% Mexican income tax rate. Please see Valoro News Release dated January 29, 2017

[Source: NI-43-101 Technical Report Preliminary Economic Assessment on the Tepal Project, Michoacan, Mexico, JDS Energy & Mining Inc; January 2017](#)





## EXPLORATION UPSIDE AT TEPAL

- South Zone - Strong potential to increase Au and Cu resource through targeted exploration and systematic drilling.
- “Central Block” Recent work indicates the presence of high grade Au-Ag epithermal zones that remain largely untested.
- Drill targets exist both within and nearby current pit shell in the “North”, “South” and “Tizate” proposed pits.

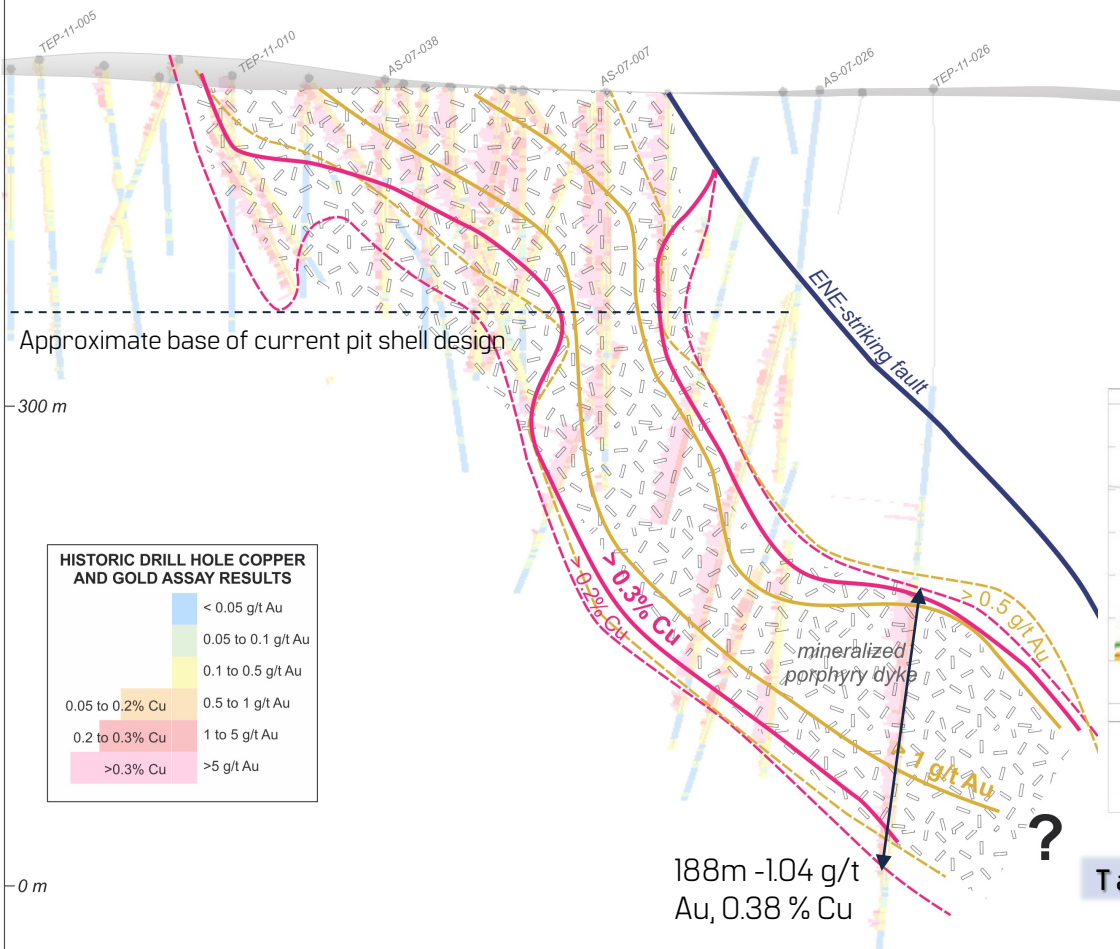
South Zone – Strong grades and open at depth.

North Tizate /Off Tizate – follow up drilling planned.

# SOUTH ZONE – TARGET: INCREASING RESOURCE BASE

NW

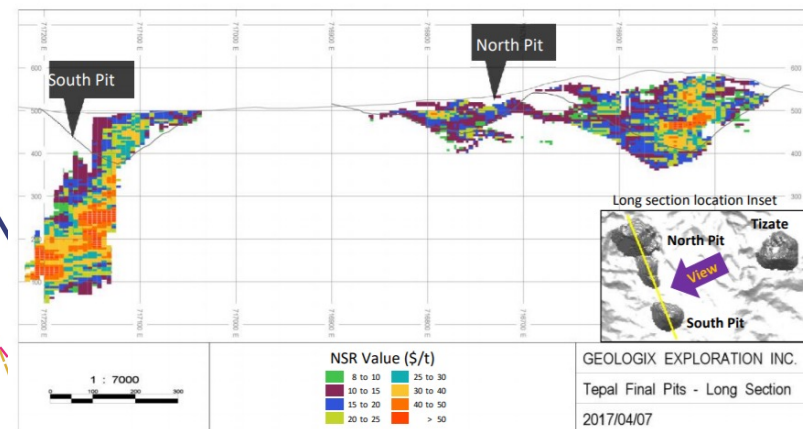
SE



**HISTORIC DRILL HOLE COPPER AND GOLD ASSAY RESULTS**

< 0.05 g/t Au	< 0.05% Cu
0.05 to 0.1 g/t Au	0.05 to 0.2% Cu
0.1 to 0.5 g/t Au	0.2 to 0.3% Cu
0.5 to 1 g/t Au	0.3 to 0.5% Cu
1 to 5 g/t Au	0.5 to 1% Cu
> 5 g/t Au	> 1% Cu

- Re-interpreted Geologic Model indicates porphyry system in south zone open at depth.
- Current exploration focused on high-grade Au/Cu mineralization found
  - At depth in South Pit
    - TEP-11-026: 309m-496m – 188m – 1.04 g/t Au, 0.38% Cu, 1.2 g/t Ag.
  - Along Strike of and at depth in North Pit testing Cu-Au bearing porphyry stocks.

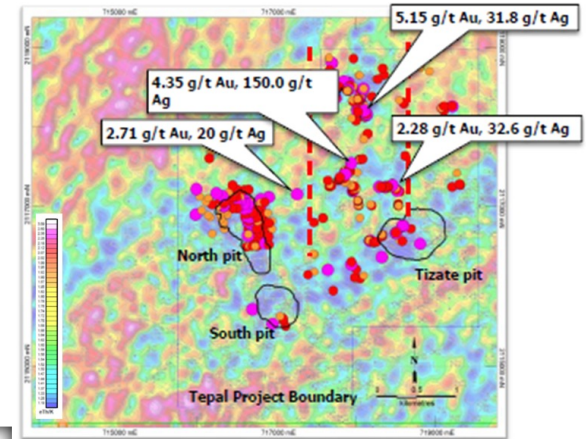
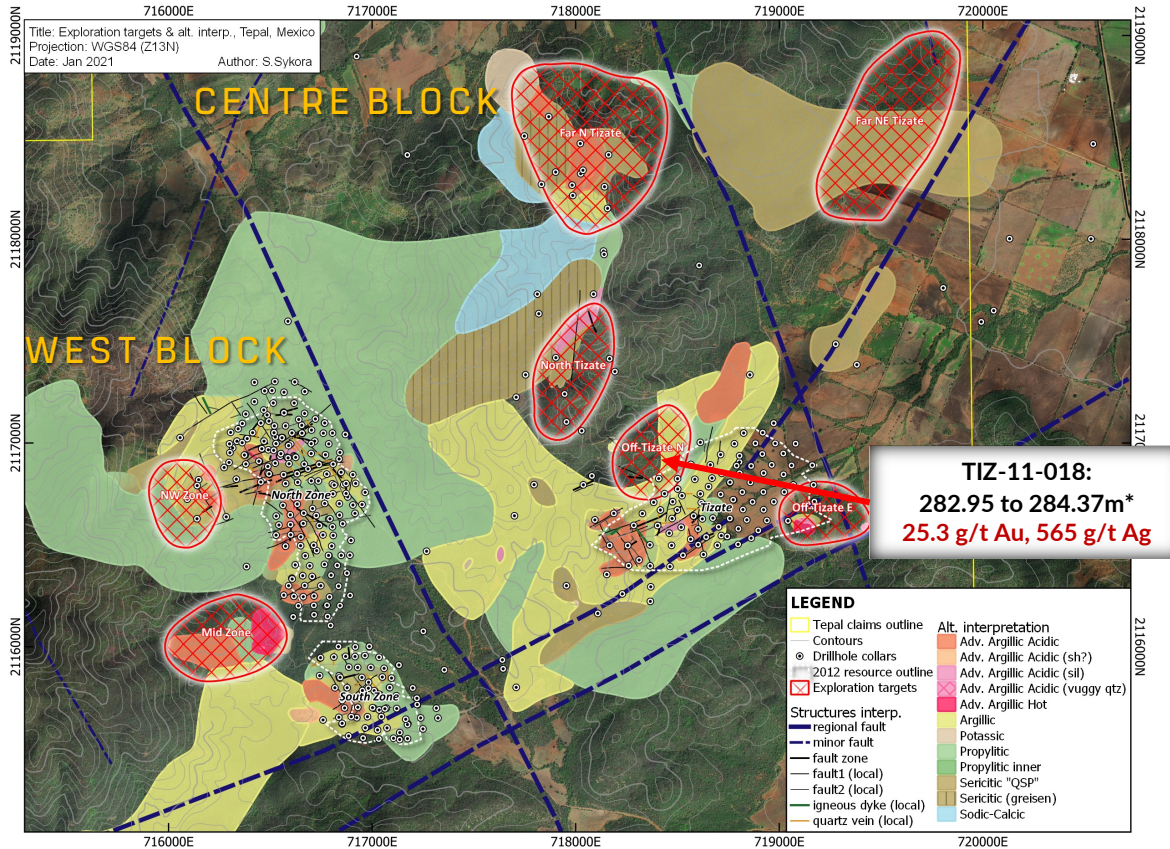


Target Area

Source: NI-43-101 Technical Report Preliminary Economic Assessment on the Tepal Project, Michoacan, Mexico. JDS Energy & Mining Inc. January 2017



# EXPLORATION UPSIDE IN CENTRE BLOCK/TIZATE



Au (ppm) in Rock Chip Samples

- 0.15 – 0.30
- 0.30 – 1.00
- >1.00

- 5 Zones identified. 12 holes planned alongside surface exploration work.
- Recent work indicates the presence of Au-Ag epithermal zones that remain largely untested.

# WHY INVEST IN DEFIANCE?

**Robust Resource Base  
(1,2) and Significant  
Exploration Potential**

**Proven Mine Finders:**  
**Experienced** Management  
team with decades of  
exploration success leading  
to M&A and Mine  
Development

**Leverage to Precious  
Metal Prices:**  
Tepal Au Price Sensitivity  
Zacatecas Resource  
Upside

**Highly Aligned with  
Shareholders:**  
Management and Key  
Shareholders aligned

**Drill-ready exploration  
targets:** Systematic exploration  
and reinterpretation  
of historical work has generated  
highly prospective targets to add  
ounces and increase grade.



[\(1\) Please see Defiance news release dated January 15, 2015 and Appendix for 43-101 Inferred Mineral Resource Estimate](#)

[\(2\) Please see ValOro news release dated January 19, 2017 and Appendix for PEA Assumptions](#)





**DEFIANCE**  
SILVER CORP

Defiance Silver Corp  
Suite 2900 – 550 Burrard Street  
Vancouver, BC, V6C 0A3 Canada

[www.defiancesilver.com](http://www.defiancesilver.com)  
[info@defiancesilver.com](mailto:info@defiancesilver.com)  
+1 (604) 343-4677



SCAN ME

TSXV:DEF OTC:DNCVF

# APPENDIX



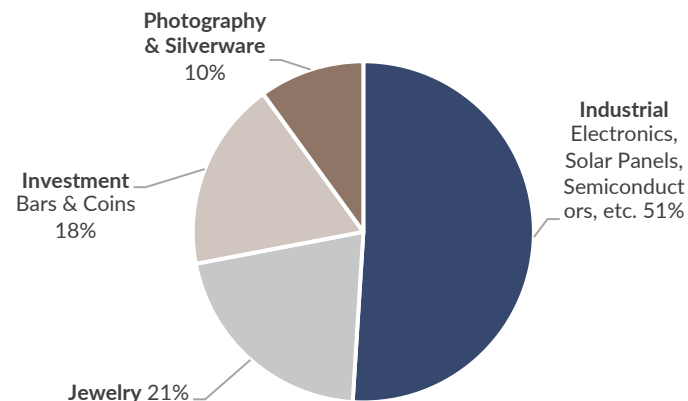
# UNEXPECTED DEVELOPMENTS | A CATALYST FOR SILVER

Global Silver Production by Country in 2018

Rank	Country	MMozs	
1	Mexico	196.6	Mandatory Mine Closures
2	Peru	144.9	
3	China	114.9	Disruption or Voluntary Closures
4	Russia	43.4	
5	Chile	42.1	
6	Bolivia	39.9	
7	Poland	39.6	
8	Australia	35.4	
9	United States	28.0	
10	Argentina	26.5	
11	Canada	24.8	
12	India	23.2	
13	Kazakhstan	19.5	
14	Sweden	14.6	
15	Indonesia	11.9	
16	Morocco	11.2	
17	Turkey	5.5	
18	Armenia	5.0	
19	Iran	3.6	
20	Dominican Republic	3.4	
21	Rest of World	21.7	
	<b>World Total</b>	<b>855.7</b>	
	<b>Percent of Production Offline</b>	<b>&gt;47.7</b>	

- COVID-19 has significantly shifted the supply/demand picture for silver.
- As manufacturing activity ceased, industrial demand has weakened and will recover as the global economy resumes and recovers.
- While industrial demand has softened, the more severe economic contraction has been in the service sector rather than manufacturing.

Silver Demand by Industry



- Mine suspensions are offsetting weak industrial demand for silver, with production halted in countries that represent 47.7% of global silver production.
- Silver already had an 861.7mm oz deficit and mine supply has been declining since 2015.
- Over 70% of silver is mined as a by-product in polymetallic mines; a slowing economy will lower demand for base metals, putting pressure on prices and mines.
- Mine resummptions and ramp-up will be gradual and are uncertain, while global scrap supply has dropped 50% since 2011.

Source: Bloomberg, Sprott, The Silver Institute  
GFMS World Silver Survey

# SAN ACACIO PROJECT

## 43-101 COMPLIANT INFERRED MINERAL RESOURCE ESTIMATE

### 43-101 Inferred Mineral Resource Estimate

		Ag (g/t)	Au (g/t)	AgEq (g/t)	Ag (ozs)	Au (ozs)	AgEq (ozs)
VETA G	2,150,000	192.43	0.19	204.66	13,302,000	10,000	14,147,000
VETA C	739,000	153.28	0.08	158.66	3,642,000	1,900	3,770,000
TOTAL	2,889,000	182.42	0.16	192.89	16,944,000	11,900	17,917,000

Source: NI-43-101 Technical Report and Resource Estimate, San Acacio Silver Deposit, Zacatecas State, Mexico, by Giroux and Cuttle, September 2014

The San Acacio Deposit has a 43-101 Inferred Mineral Resource Estimate available on [www.sedar.com](http://www.sedar.com) or [www.defiancesilver.com](http://www.defiancesilver.com). Using a silver equivalent ("AgEq")\* cut-off grade of 100 grams tonne ("g/t"). Using a gold price of \$1270/ oz Au and silver price of \$19.60 the silver equivalent value would be silver content plus 65 times the gold content. (Note: total contained AgEq values may not add exactly because of rounding). Metallurgical recoveries are not taken into account.

Base Metals not included in initial inferred resource.

# SAN ACACIO PROJECT

## "POST-RESOURCE" DRILL RESULTS SUMMARY

Hole #	From (m)	To (m)	Length (m)*	Ag (g/t)	Au (g/t)	Cu %	Pb %	Zn %	AgEq (g/t)**
SAD14-01	134.00	142.10	8.10	222.12	0.22	0.01	0.20	0.53	268.13
SAD14-02	168.50	171.70	3.20	419.09	0.82	0.02	0.14	0.30	499.43
SAD14-03	05.00	213.30	8.30	42.89	0.92	0.04	1.87	2.44	278.33
SAD14-04	147.00	153.10	6.10	138.35	0.80	0.19	1.27	1.90	340.4
SAD15-07	136.40	140.00	3.60	211.49	0.14	0.01	0.11	0.20	234.17
SAD15-08	106.05	113.30	7.25	631.46	0.43	0.01	0.09	0.22	675.58
SAD15-10	331.5	333.6	2.1	283.31	0.17	0.01	0.38	0.70	337.8
SAD15-12	226.2	253.65	27.03	148.21	0.29	0.02	0.13	0.67	202.99
SAD15-13	261.00	271.00	10.00	171.22	0.08	0.01	0.27	0.42	204.65
SAD15-13	261.00	271.00	10.00	171.22	0.08	0.01	0.27	0.42	204.65
SAD15-15	209.82	213.00	3.18	285.04	0.02	0.01	0.05	0.17	296.30

\*Please see Defiance [press release](#) of 25 Oct 2017 for further details and 2017 intercepts.

\*True Widths are approximately 70% to 80% of each intersection \*\*Reported for comparison only, with no assumptions regarding metal recovery or smelter payments. Prices used are Au: \$1210.50/ounce, Ag: \$16.33/ounce, Cu: \$2.80/pound, Pb: \$0.83/pound and Zn \$0.95/pound in US\$. 1 Gram = 0.03215074657 Troy ounce

# TEPAL GOLD-COPPER PROJECT

## 43-101 COMPLIANT MINERAL RESOURCE ESTIMATE

Tepal Total Project Resource Estimate<sup>1</sup> – March 2012

Resource Classification	Tonnes	Au Grade (g/t)	Cu Grade (%)	Ag Grade (g/t)	Contained Au (oz)	Contained Cu (lbs)
Measured	34,100,000	0.48	0.25	0.95	528,000	185,000,000
Indicated	153,700,000	0.26	0.19	1.67	1,276,000	628,000,000
Measured & Indicated	187,800,000	0.30	0.20	1.54	1,804,000	813,000,000
Inferred	35,700,000	0.16	0.15	1.68	182,000	120,000,000

Mineral Resource (Mine Diluted) Included in PEA Mine Plan<sup>12</sup>

Resource Classification	Tonnes	Au Grade (g/t)	Cu Grade (%)	Ag Grade (g/t)	Contained Au (oz)	Contained Cu (lbs)
Measured	26,800,000	0.51	0.25	0.95	438,000	150,000,000
Indicated	61,700,000	0.28	0.20	1.58	550,000	269,000,000
Measured & Indicated	88,500,000	0.35	0.21	1.39	988,000	419,000,000
Inferred	2,000,000	0.19	0.18	2.73	12,000	8,000,000

1. The resource states in the table conforms to CIM guidelines for reasonable potential for economic extraction and is not to be confused as reserves. Resource numbers above are rounded to the nearest 100,000 tonnes, 1,000 oz Au and 1,000,000 lbs Cu.
2. The mineral resource stated in the table conforms to CIM guidelines for reasonable potential for economic extraction and is not to be considered mineral reserves.
3. NSR cut-off for sulphide material is \$8.19/tonne milled and for oxide material is \$10.13/tonne milled.

Source: NI-43-101 Technical Report Preliminary Economic Assessment on the Tepal Project, Michoacan, Mexico, JDS Energy & Mining Inc. January 2017.

# TEPAL GOLD-COPPER PROJECT

## PROJECT PROFILE

Flotation Concentrate & Tails Cyanidation Recovery Estimates

	Flotation	Tails Cyanidation	Combined Recovery
<b>Tepal Recovery</b>			
<b>Copper</b>	88.2%		88.2%
<b>Gold</b>	62.4%	16.5%	78.9%
<b>Silver</b>	27.4%	15.5%	40.2%
<b>Tizate Recovery</b>			
<b>Copper</b>	85.9%		85.9%
<b>Gold</b>	55.0%	16.0%	74.0%
<b>Silver</b>	59.6%	18.5%	78.1%

Oxide Leach Recovery Estimates

<b>Tepal Recovery</b>	
<b>Gold</b>	83.2%
<b>Silver</b>	63.3%
<b>Tizate Recovery</b>	
<b>Gold</b>	75.3%
<b>Silver</b>	55.9%

1. Au = gold, Cu = copper, Ag = silver, Mo = molybdenum, g/t = grams per tonne, % = percent, oz. = ounces, lbs. = pounds. Resource numbers above are rounded to nearest 100,000 tonnes, 1,000 oz Au, 1,000,000 lbs Cu and 1,000 oz. AuEq <sup>2</sup>AuEq = gold equivalent and is calculated using gold and copper only using \$1000 Au, \$2.75 Cu metal prices (AuEq = (lbs. Cu\*\$2.75/\$1000) + Au oz.). All dollar values stated are \$USD

2. The mineral resource stated in the table conforms to CIM guidelines for reasonable potential for economic extraction and is not to be considered mineral reserves.

Source: NI-43-101 Technical Report Preliminary Economic Assessment on the Tepal Project, Michoacan, Mexico, JDS Energy & Mining Inc, January 2017

# TEPAL GOLD-COPPER PROJECT

## PROJECT PROFILE

2017 PEA Assumptions

<b>Sustaining Capital Costs</b>	<b>\$86.7</b>
Mine Life	<b>9.8 years</b>
Total Material Mined	<b>142.9 Mt</b>
Strip Ratio	<b>0.6 : 1</b>
Average Plant Throughput (Sulphide + Oxide)	<b>9.6 Mtpa</b>
Average Au Sulphide Head Grade	<b>0.33 g/t</b>
Average Cu Sulphide Head Grade	<b>0.21%</b>
Average Au Oxide Head Grade	<b>0.45 g/t</b>
LOM Average Au Sulphide Recovery (combined Flotation & CIL)	<b>77%</b>
LOM Average Cu Sulphide Recovery	<b>87%</b>
LOM Average Au Oxide Recovery	<b>81%</b>

(1) Cash cost includes all mining, milling & refining, transport, mine-level G&A, and royalty costs

2017 PEA Highlights

% Δ in Base Case Metals Prices	-10%	0%	10%
Gold Price (US\$/oz)	\$1,125	\$1,250	\$1,375
Copper Price (US\$/lb)	\$2.25	\$2.50	\$2.75
Silver Price (US\$/oz)	\$16.20	\$18.00	\$19.80
<b>All-In Sustaining Costs (net of byproducts)</b>			
Gold (US\$/oz)	\$497	\$396	\$296
Copper (US\$/oz)	\$0.69	\$0.38	\$0.07
<b>Pre-Tax</b>			
NPV(5%) (US\$ millions)	\$165.6	\$299.4	\$433.3
IRR (%)	25%	36%	46%
Payback Period (years)	2.2	1.6	1.3
<b>After-Tax:</b>			
NPV(5%) (US\$ millions)	\$77.5	\$169.4	\$257.2
IRR (%)	15%	24%	31%
Payback Period (years)	3.0	2.3	1.9

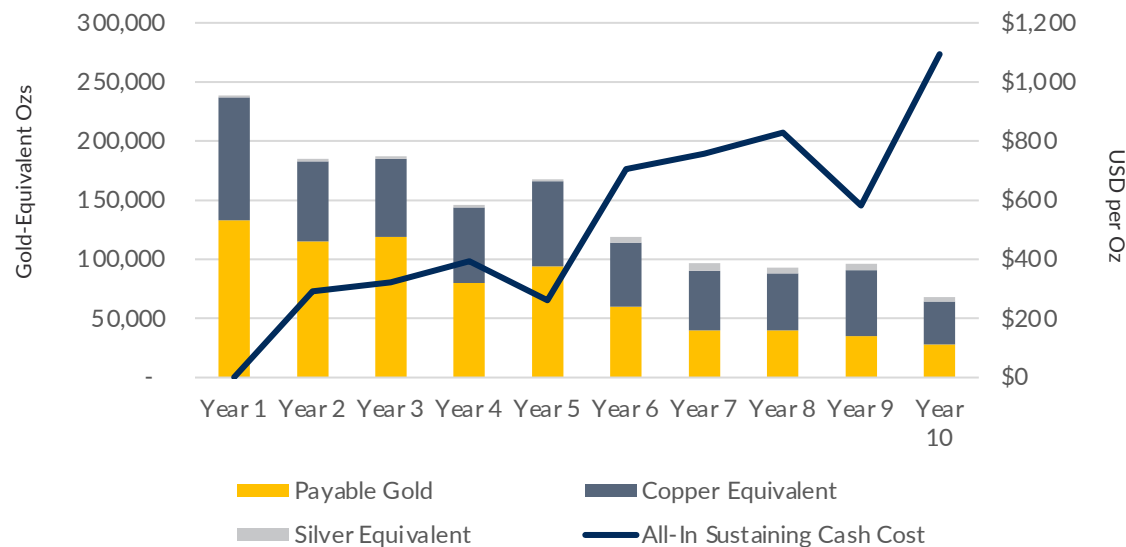
Source: NI-43-101 Technical Report Preliminary Economic Assessment on the Tepal Project, Michoacan, Mexico, JDS Energy & Mining Inc. January 2017



# TEPAL GOLD-COPPER PROJECT

## PROJECT PROFILE

2017 PEA Production by Year & Cost Profile



(1) Using US\$1,250/oz. Au price, US\$2.50/lb. Cu price and US\$18.00/oz. Ag price

(2) Cash cost includes all mining, milling & refining, transport, mine-level G&A, and royalty costs; net of byproduct credits

Source: NI-43-101 Technical Report Preliminary Economic Assessment on the Tepal Project, Michoacan, Mexico, JDS Energy & Mining Inc. January 2017